

# Welcome Back!

## Class of 2025



**GCE N(A)- & N(T)-LEVEL EXAMINATION  
Result release on 18 December 2025 (Thur)**

Briefing by Year Head,  
Mdm Sri Devi

# Gentle reminders

- (1) Put your handphone on silent mode.
- (2) Be attentive to the briefing as there is **key information and deadlines** you need to know.
- (3) The slides will be sent to you through your FTs and will also be uploaded on the school website.
- (4) SGC – You will be informed by your FTs on dates you can come to NV to collect (once the SGCs are printed and sent to our school - roughly in Feb/March)
- (5) Collect your SGC asap within 1-2 wks (yourself/Proxy) when your FT informs you (**March/April 2026**)
- (6) Check your name and other details when you collect your SGC at the GO – inform your FT on any errors

# Gentle reminder

Please proceed to the **General Office** to make payment for outstanding school fines



**The N-Level  
examination is not  
the destination.**

**It is part of your  
education journey.**

**Dear students,**

You have worked hard to reach this stage. Let's celebrate your efforts!

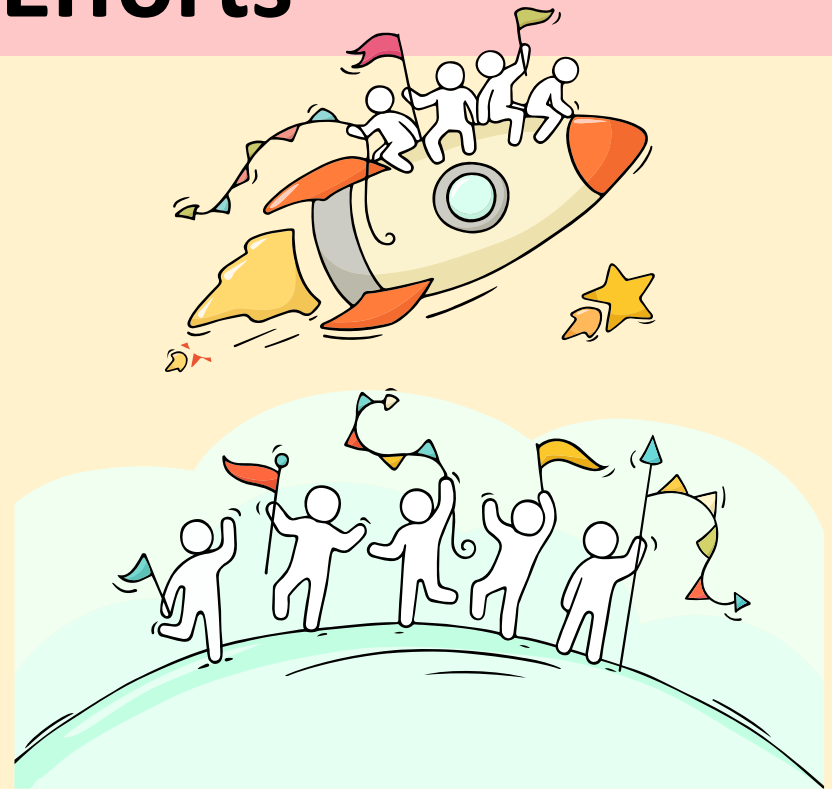


# Celebrate Efforts

The N-Level is a culmination of years of hard work and perseverance.

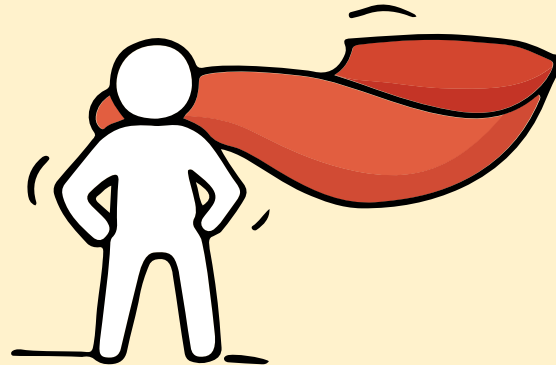
Let's celebrate our efforts regardless of the results.

Let's mark the end of the academic year by reflecting together on all our previous successes in school and the challenges we have overcome!





Remember that while **everyone's educational journey is different, we can each have a fulfilling outcome!**





# Concerned about your next steps?

## Stop

- Calm yourself down. Take a few deep breaths.

## Think

- Think through the different options that are available for you. Keep things in perspective.
- Remember that the N-Level is one part of your life journey and not the destination.

## Do

- Approach a trusted adult and seek his/her help. Have a conversation with this person about what would be best for you.
- Make a decision and take action based on your options.

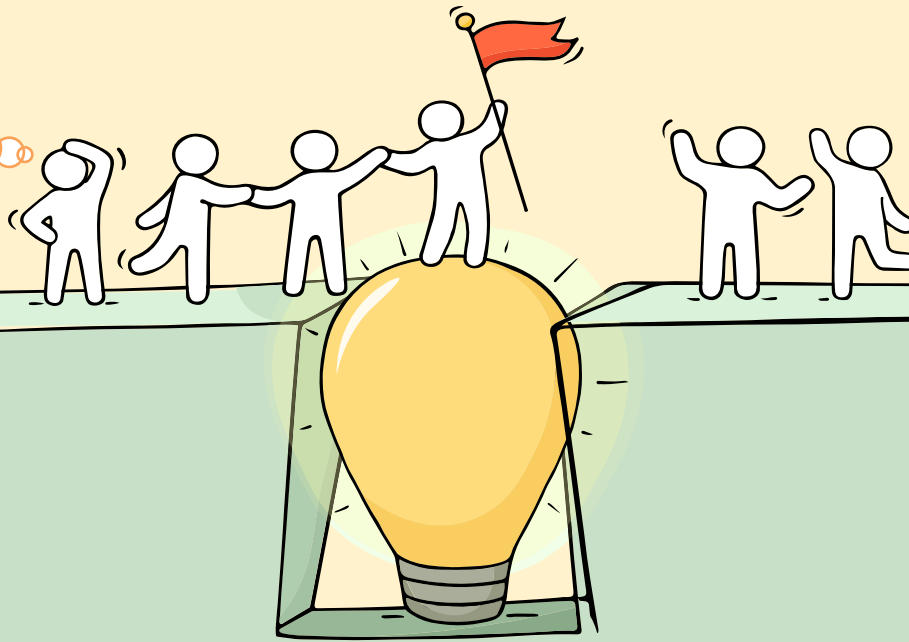
**When you receive your results, you may experience a range of emotions.**


**Managing these emotions well will allow you to stay calm and make rational decisions.**

# Reaching out for help is a sign of strength, not weakness.

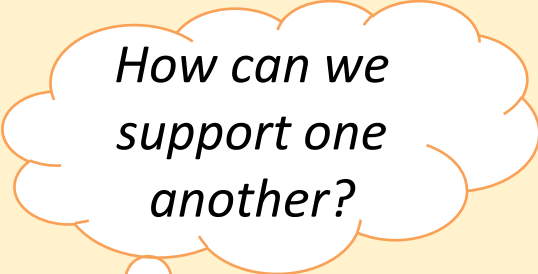
If you have any questions about your options or are not coping well, do reach out to someone you trust and speak with them. It could be a parent/guardian, teacher, ECG Counsellor, School Counsellor or a friend that you can talk to.

*Is there  
someone we  
can speak  
with?*





**Keep a lookout for  
some of these signs  
in your peers or in  
yourself**



*How can we  
support one  
another?*



**D**

Deliberately avoiding others

**I**

Increased irritability, restlessness, agitation, stress and anxiety

**S**

Sending or posting moody messages on social media

**T**

Talking about death or dying

**R**

Reacting differently or gradually losing interest in things they used to like

**E**

Eating more than usual or having a much reduced appetite

**S**

Sleep pattern changes with difficulty falling asleep or oversleeping

**S**

Slowing down of energy levels

If you notice any of these signs in yourself or your friends,  
**have a chat with your school counsellor or teacher**  
Or contact SOS 24-hour hotline at **1-767** or **1800-221-4444**



Ministry of Education  
Singapore

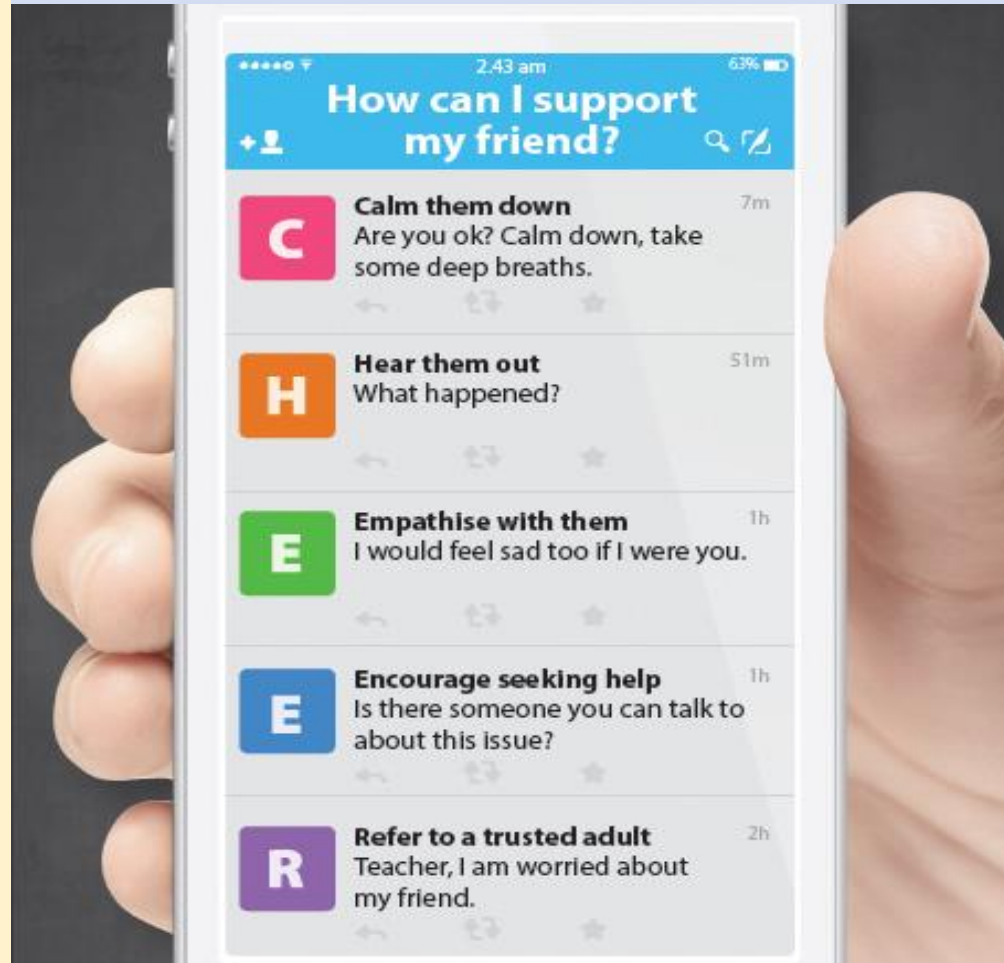
© 2021 Guidance Branch, Student Development Curriculum Division (SDCD), Ministry of Education, Singapore. No part of this final product may be reproduced or transmitted in any form or by any means, electronic or mechanical, including photocopy, recording or any other information storage and retrieval system, without written permission from SDCCD, MOE.

# Supporting Your Friend

We may each experience different emotions upon receiving the results. You can share your friends' joy by congratulating them or give words of encouragement to friends who may be disappointed with their results.



Keep a lookout for your friends in distress. You can support them in the following ways:



# Support is readily available for you.

There are other hotlines and chats available if you are more comfortable seeking help using these platforms. Scan the QR code below for a helpful resource.



**SOS** provides round-the-clock emotional support for those in distress, thinking of suicide or affected by suicide.

Call: **1767**  
(24-hour helpline)

Whatsapp: **9151 1767**  
(24-hour Care Text)

**TOUCHline** is a helpline to provide youths with emotional support and practical advice.

Call: **1800-377 2252**  
Monday- Friday (Excluding Public Holidays):  
9am – 6pm

## Community Health Assessment Team

**(CHAT)** provides personalised and confidential mental health checks and consultation for youths. To speak with a youth support worker, you can:

Visit: **CHAT Hub at \*SCAPE, #05-05**  
Call: **6493 6500/ 6501**  
Email: **CHAT@mentalhealth.sg**

**mindline.sg** is an online platform that provides tools, tips and resources to help you manage your health and well-being. Find out more at:  
[www.mindline.sg](http://www.mindline.sg)



**Carey** is an online platform by Care Corner that provides free mental health check-ins with mental health professionals. Find out more at:  
<https://carey.carecorner.org.sg/>

**eC2** is an e-Counselling Centre where you can talk to a trained counsellor about the issues you are facing, right where you are.

Chat with a counsellor at:  
[www.ec2.sg](http://www.ec2.sg)  
Monday – Friday (Excluding Public Holidays):  
10am – 12pm & 2pm – 5pm

# Documents you will receive

1. N-Level Certificate
2. Results Slip
3. Form N

# 1. Result Slips

- Check your personal particulars on your result slip.
- If there are any errors, inform your Form Teacher immediately.

# 2. Form N

1. The Form N contains codes of ITE courses you are eligible for  
*(please open it carefully – tear the edges)*
2. **Check course codes**
3. Refer to the ITE website for enrolment details
4. Check whether you qualify for DPP (4NA)



# Appeal to Review Results

<b>Fees (inclusive of GST)</b>
S\$125.00

Candidates may appeal for a review of their 2025 GCE N(A)/N(T)-Level results. **All appeals must be submitted through schools, with the payment of the appeal fees made through the Candidates Portal by Friday, 26 December 2025, 12.00 pm.**

Applications after the closing date will not be considered. The procedures for the appeal submission are detailed below.

Please note that reasons related to Special Consideration (e.g. unwell, bereavement) cannot be considered for the appeal for review of results

**\* You can only appeal for the results to be reviewed but are not allowed to view the scripts.**

# Secondary 5N(A) for O-Level 2026

- (a) **ELMAB3** - aggregate score of **19** points or less (excluding bonus points); and
- (b) **At least a Grade 5 for all subjects used in the computation of ELMAB3.**

- ***Grade 6 for subjects taken at the GCE N(A)-Level cannot be considered for the computation of the ELMAB3 aggregate score.***
- ***Subjects graded 'U' will not be considered***

# To Do – For 5NA (2026)

- (b) Inform your FT on your decision to go to 5NA by **22 Dec (Mon), 12pm**
  
- (c) Report to North Vista Secondary on **2 Jan 2026 (Fri)**

# Institute of Technical Education (ITE)

## TO DO:

- (a) Submit application for course (ITE application portal) between **18 Dec (Thur), 2.30pm - 22 Dec (Mon), 5pm**
  
- (b) ITE posting results – check online via ITE application portal: **26 Dec (Fri), 9am**
  
- (c) Accept/reject offer by: **26 Dec (Fri), 9am to 2 Jan 2026 (Fri), 11.59pm**

# To Note:

- Limited places in each ITE course
- Not participating in the Main Application Phase will reduce your chance of gaining a place
- Exercise the full choices in your application
- Include less popular options to maximise your chance of a successful posting
- Please complete all applications on time

# **Direct-Entry-Scheme to Polytechnic Programme (DPP) - for 4NA only**

- The Direct-Entry-Scheme to Polytechnic Programme (DPP) prepares candidates for progression into **selected polytechnic diploma courses** via a **two-year Higher Nitec course at ITE**.
- Under the DPP, candidates who **successfully complete their Higher Nitec course** and **attain the required minimum qualifying Higher Nitec Grade Point Average (GPA)** are **guaranteed a place in a polytechnic diploma course mapped to their Higher Nitec course**.
- **School candidates eligible for the DPP** will receive a **copy of Form N** from their secondary schools, inviting them to apply for the DPP.

# Direct-Entry-Scheme to Polytechnic Programme (DPP) - for 4NA only

- Sec 4N(A) students who obtain an **ELMAB3 aggregate of 19 points or less** have the option of enrolling in the **DPP at ITE**.
- Students accepted into the DPP will enrol directly into Higher NITEC (Higher National ITE Certificate) courses at ITE and are subsequently guaranteed a place in a polytechnic diploma course mapped to their Higher NITEC, subject to them meeting the Grade Point Average (GPA) requirements.

# To Do – For DPP

(a) Apply for DPP via ITE application portal:  
**18 Dec (Thur), 2.30pm – 22 Dec (Mon), 5pm**

(b) Check posting results online ITE application portal on  
**26 Dec (Fri), 2pm**

To accept/reject DPP offer : Log on to ITE application portal:  
**26 December (Fri), 2pm - 2 Jan (Fri) 2026, 1159pm**

*If you do not accept the offer, or do not have a confirmed place in DPP, you will need to report to NV on 2 Jan 2026 for Sec 5NA*

*Being eligible to apply for the DPP does not guarantee a successful placement in a DPP Higher NITEC course.*



# Polytechnic Foundation Programme ( PFP)

ELMAB3 aggregate of **12 points or less** and meet subject-specific Minimum Entry Requirements

- 1-year foundation programme offering a practice-oriented curriculum taught by polytechnic lecturers
- PFP students are given provisional places in diploma programmes, subject to them passing all modules

# To Do – FOR PFP

- (a) Applications for PFP will open in Jan 2026, on the day of the GCE Ordinary-Level (O-Level) Examinations results release.
- (b) Candidates eligible for the PFP will receive a copy of Form P on the same day, inviting them to apply for the PFP.
- (c) Apply for PFP after GCE O-Level result release (in Jan)
- (d) Students interested in applying for PFP **should first report to NV on 2 Jan 2026 (Fri) for Sec 5NA while awaiting notification and confirmation of a place in PFP.**
- (e) Students who accept their PFP offers will withdraw from Sec 5 by end Jan 2026\*

***Being eligible to apply for the PFP does not guarantee a successful placement in a PFP course.***

# Can't decide on DPP or PFP?

## Option 1


- Apply for DPP in Dec 2025
- If you are eligible for PFP after release of GCE O-Level results, you will receive a PFP eligibility form
- If you accept the PFP offer, you will withdraw from DPP and apply for a refund of DPP enrolment fees

## Option 2

- Progress to Sec 5
- Apply for both PFP and DPP upon release of GCE O-Level results in Jan 2026
- If you are offered a place in both PFP and DPP, you may **only accept one offer**

## Additional Information For Students

The information listed in the table below will help you to make an informed decision on which choice of courses you could consider applying at ITE.

S/N	Information	Attachment/Link
1	ITE Factsheet 2025	 2025 JIEN Factsheet
2	ITE Course Booklet 2026	<a href="#">ITE-Course-Booklet-2025.pdf</a>
3	Information on Progression Opportunities (From <i>Nitec</i> Courses to <i>Higher Nitec</i> and Technical diplomas)	<a href="https://www.ite.edu.sg/current-full-time-students/progression/">https://www.ite.edu.sg/current-full-time-students/progression/</a>
4	Information on Progression Opportunities (from <i>Higher Nitec</i> courses to diploma courses)	<a href="https://www.ite.edu.sg/secondary-school-students/admissions/academic-progression/academic-progression-from-full-time-higher-nitec/">https://www.ite.edu.sg/secondary-school-students/admissions/academic-progression/academic-progression-from-full-time-higher-nitec/</a>

# Key Dates for Jan 2026 Intake Exercise

Key Activity	Period for 3-Year and 4-year Higher Nitec courses	Remarks
<b>1st Phase (Main Phase)</b>		
Application	18 Dec 2025 (2.30pm) to 22 Dec 2025 (5pm)	Apply through the Internet at <a href="https://www.ite.edu.sg">https://www.ite.edu.sg</a> with SingPass.
Release of Results	26 Dec 2025	Check results at <a href="https://istudent.ite.edu.sg">https://istudent.ite.edu.sg</a> with web ID and password
Acceptance of Course Offer Period	26 Dec 2025 to 2 Jan 2026	Accept course offer at <a href="https://istudent.ite.edu.sg">https://istudent.ite.edu.sg</a> with web ID and password
<b>2nd Phase (Late Application/Appeal Phase)</b>		
Application	26 Dec 2025 to 2 Jan 2026	Apply through the Internet at <a href="https://istudent.ite.edu.sg">https://istudent.ite.edu.sg</a> with SingPass.
Release of Results	6 Jan 2026	Check results at <a href="https://istudent.ite.edu.sg">https://istudent.ite.edu.sg</a> with web ID and password
Acceptance of Course Offer Period	6 Jan 2026 to 9 Jan 2026	Accept course offer at <a href="https://istudent.ite.edu.sg">https://istudent.ite.edu.sg</a> with web ID and password
<b>3rd Phase (Final Top-up Phase)</b>		
Application	1 <sup>st</sup> Top-up Phase Application - 9 Jan to 16 Jan 2026 2 <sup>nd</sup> Top-up Phase Application - 22 Jan to 6 Feb 2026	Apply through the Internet at <a href="https://istudent.ite.edu.sg">https://istudent.ite.edu.sg</a> with SingPass.
Release of Results	1 <sup>st</sup> Top-up Phase - 12 Jan to 22 Jan 2026 2 <sup>nd</sup> Top-up Phase - 22 Jan to 11 Feb 2026	Check results at <a href="https://istudent.ite.edu.sg">https://istudent.ite.edu.sg</a> with web ID and password
Acceptance of Course Offer Period	1 <sup>st</sup> Top-up Phase - 12 Jan to 22 Jan 2026 2 <sup>nd</sup> Top-up Phase - 22 Jan to 11 Feb 2026	Accept course offer at <a href="https://istudent.ite.edu.sg">https://istudent.ite.edu.sg</a> with web ID and password
<b>Jan 2025 Intake Term Commencement Date: <u>12 Jan 2026</u></b>		

# Provision of Education and Career Guidance (ECG) services

Candidates are encouraged to explore the range of education and career pathways available to them to make informed decisions about their next steps. Refer to the following websites for more information:

- MOE's CourseFinder

(<https://www.moe.gov.sg/coursefinder>) on offerings and courses in the polytechnics and ITE

- MySkillsFuture

(<https://go.gov.sg/mysfsec>) on career and education pathways

School candidates may also consult their teachers or ECG Counsellors in their respective secondary schools about their next steps.

Alternatively, students can make an ECG counselling appointment via the ECG Centre at MOE (Grange Road) at <https://go.gov.sg/moe-ecg-centre>.

The MOE ECG Centre offers online or phone counselling services to GCE N(A)/N(T)-Level students from 11 to 26 December 2025 (Weekdays: 9.00 am to 5.00 pm) and 9 am to 12 pm on Sat & eve of PH

# Education & Career Guidance



*Ms Jaslyn*

Interested to discover  
your values, interests,  
personality and  
strengths?

Want to explore the post-  
secondary education  
options out there?

Scan the QR code or email  
[jaslyn\\_shalini\\_a\\_r@schools.gov.sg](mailto:jaslyn_shalini_a_r@schools.gov.sg)  
to make an appointment with me  
Available every Mon & Tues, 8am-5pm  
@ ECG room in the library

